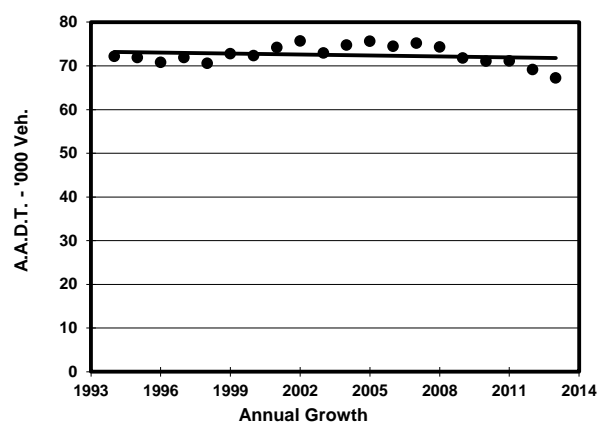
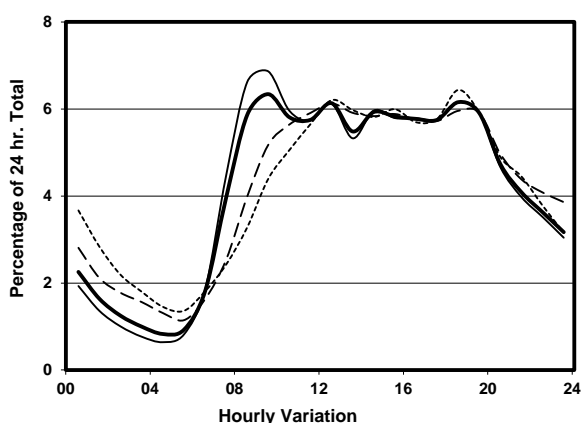
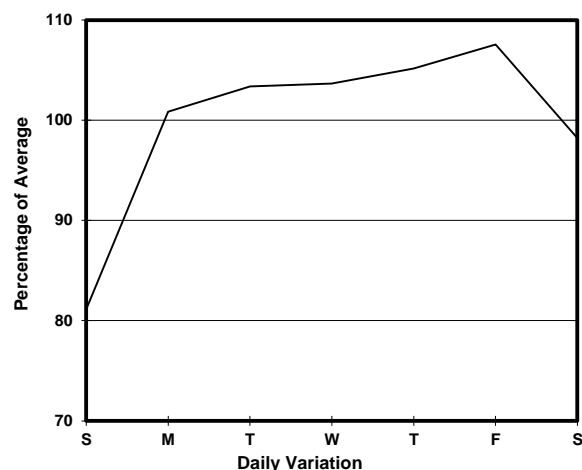
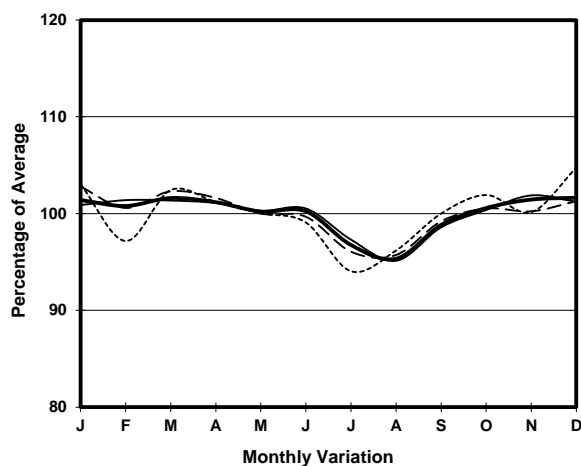


YEAR 2013 LINK QUEENSWAY (from RODNEY ST to QUEEN'S RD E)

CORE STATION 1007  
ROAD NETWORK MAJOR  
ROAD TYPE PRIMARY DISTRIBUTOR



## 1. TRAFFIC FLOW VARIATION AND GROWTH



## 2. TRAFFIC CHARACTERISTICS (BY DIRECTION)

Parameter	All - Day	Mon. - Fri.	Sat.	Sun.
<b>EAST BOUND</b>				
A.A.D.T.	47020	49670	46130	38080
R 12 / 24 - %	69.2	71	64.5	62.8
R 16 / 24 - %	86.9	88.4	83.4	81.3
AM Peak Hour	0900-1000	0900-1000	0900-1000	0900-1000
One-way flow at AM peak hour	2990	3400	2430	1710
T - % (AM)	-	13	-	-
PM Peak Hour	1800-1900	1800-1900	1800-1900	1800-1900
One-way flow at PM peak hour	2840	2980	2730	2460
T - % (PM)	-	12.1	-	-
Prop.of commercial vehicles - 16 hr.	-	12.9	-	-
<b>WEST BOUND</b>				
A.A.D.T.	20210	21050	20580	17160
R 12 / 24 - %	67.9	69.5	64.3	62.4
R 16 / 24 - %	87.7	89.1	84.7	82.8
AM Peak Hour	0900-1000	0900-1000	0900-1000	0900-1000
One-way flow at AM peak hour	1270	1450	1020	730
T - % (AM)	-	19	-	-
PM Peak Hour	1800-1900	1800-1900	1700-1800	1800-1900
One-way flow at PM peak hour	1300	1370	1290	1100
T - % (PM)	-	22	-	-
Prop.of commercial vehicles - 16 hr.	-	19.5	-	-

## 3. OTHER INFORMATION AND COMMENT

**4. Vehicle classification and occupancy - Monday to Friday**

Time		Class of vehicle									
		Motor Cycle	Private Car	Taxi	Private LB	PLB	Goods veh.		Non Fr. Bus	Fr. Bus	
							Light	M & H		SD	DD
0700-0800	Pro	1.8	17.7	42.1	3.0	2.8	8.0	0.7	5.8	0.4	17.7
	Ocp	1.0	1.4	1.8	4.4	12.8	1.7	1.3	9.2	14.7	27.1
0800-0900	Pro	1.3	35.8	36.6	1.1	2.4	5.0	0.8	4.4	0.2	12.4
	Ocp	1.1	1.4	1.8	5.1	9.5	1.9	1.7	19.8	11.5	30.6
0900-1000 Peak hour	Pro	1.1	34.5	38.8	0.5	2.3	8.3	0.9	2.6	0.2	10.9
	Ocp	1.1	1.4	1.8	4.2	11.8	1.7	1.6	12.6	16.8	21.6
1000-1100	Pro	0.8	33.9	37.0	0.6	1.4	12.3	0.6	1.8	0.3	11.2
	Ocp	1.0	1.4	1.8	2.5	9.3	1.7	1.6	17.9	8.0	17.9
1100-1200	Pro	0.5	37.8	35.6	1.0	1.4	10.8	1.1	1.8	0.3	9.7
	Ocp	1.2	1.5	2.0	2.1	7.8	1.6	1.7	16.8	6.6	20.8
1200-1300	Pro	1.6	40.0	36.3	0.3	1.3	8.3	0.8	1.6	0.3	9.5
	Ocp	1.1	1.4	2.2	5.3	10.3	1.8	1.7	11.8	8.3	22.5
1300-1400	Pro	1.6	37.6	37.2	0.7	1.0	8.9	1.2	1.3	0.2	10.2
	Ocp	1.0	1.5	2.0	2.7	11.2	1.6	1.2	3.6	12.7	20.9
1400-1500	Pro	1.4	38.0	35.5	0.6	0.7	11.5	1.1	1.7	0.2	9.2
	Ocp	1.0	1.6	2.1	3.8	9.1	1.9	1.4	6.8	10.0	24.8
1500-1600	Pro	2.2	38.0	31.4	0.9	1.0	12.5	0.9	1.5	0.4	11.3
	Ocp	1.2	1.5	2.1	3.5	12.1	1.7	1.0	12.4	11.0	24.3
1600-1700	Pro	1.6	45.4	27.8	1.0	1.0	9.0	1.0	1.6	0.3	11.3
	Ocp	1.1	1.5	2.1	4.1	8.9	1.8	1.4	9.7	20.3	24.4
1700-1800	Pro	1.5	45.6	30.8	0.3	1.5	6.0	0.2	1.5	0.3	12.3
	Ocp	1.0	1.5	2.2	1.3	10.6	1.8	1.5	8.1	14.8	28.4
1800-1900	Pro	1.7	48.4	29.6	0.4	1.9	3.1	0.3	2.4	0.3	11.9
	Ocp	1.1	1.6	2.3	2.0	13.4	1.8	1.7	10.6	24.9	39.7
1900-2000	Pro	1.7	61.3	18.0	0.1	1.5	2.5	0.2	1.8	0.3	12.6
	Ocp	1.1	1.5	2.1	1.0	13.8	1.5	1.5	12.1	14.5	36.5
2000-2100	Pro	1.4	36.1	44.4	0.0	1.7	0.9	0.1	1.8	0.4	13.1
	Ocp	1.2	1.5	1.9	0.0	10.4	2.1	2.0	7.9	16.1	29.5
2100-2200	Pro	1.0	25.2	56.7	0.1	1.2	1.2	0.1	1.0	0.3	13.2
	Ocp	1.0	1.5	2.1	3.0	12.7	2.0	1.0	4.3	9.4	24.4
2200-2300	Pro	2.0	22.2	58.0	0.0	1.4	0.9	0.0	0.3	0.3	14.8
	Ocp	1.2	1.6	2.0	0.0	8.4	1.3	0.0	6.5	9.8	23.5
16 hours	Pro	1.4	38.1	36.5	0.6	1.5	7.2	0.7	2.1	0.3	11.7
	Ocp	1.1	1.5	2.0	3.6	10.8	1.7	1.5	12.2	13.2	26.2

**Legend**

- Pro.** Proportion of vehicles in % (Sum may not add up to 100% due to figure rounding)  
**Ocp.** Average occupancy of vehicles  
**M&H** Medium and Heavy